

MAROLO

HYDRAULIC 2-POST VEHICLE LIFT

3200 LV



SPORTS GROUND AND GREEN SPACE MAINTENANCE EQUIPMENT



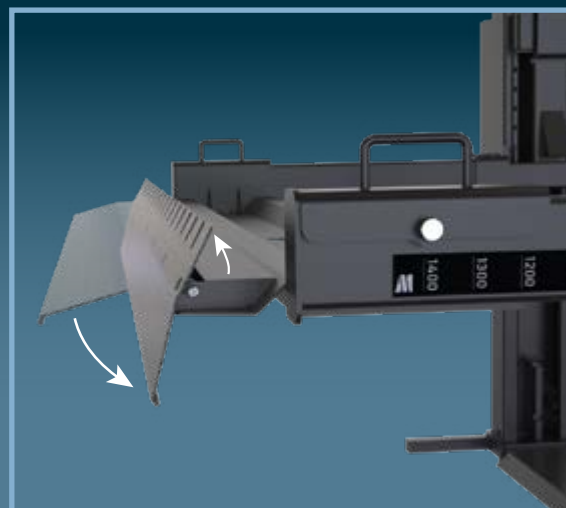
MADE IN
FRANCE



HYDRAULIC 2-POST LIFT 3200 LV

Hydraulic dual-post vehicle lift designed for agriculture and landscaping equipment, as well as 3- and 4-wheeled vehicles weighing up to 3.2 tons : Mowers, tractors, ATVs, minicars, lightweight urban vehicles (Max. capacity per wheel : 800 kg).

- Max. working height : 1800 mm
- Max. track width : 2500 mm
- Adjustable wheelbase (from 1050 to 2600 mm) to accomodate a wide range of 3- and 4-wheeled vehicles.
- Sliding wheel supports to quickly adjust wheelbase measurement.
- Pivoting access ramps that act as stoppers to secure the wheel once the lift is raised.
- Limit switch and auditory signal when lowering the lift to warn nearby personnel and prevent injuries.
- Recessed installation kit available (Ref. 700457), contact us for more information.



PIVOTING RAMPS

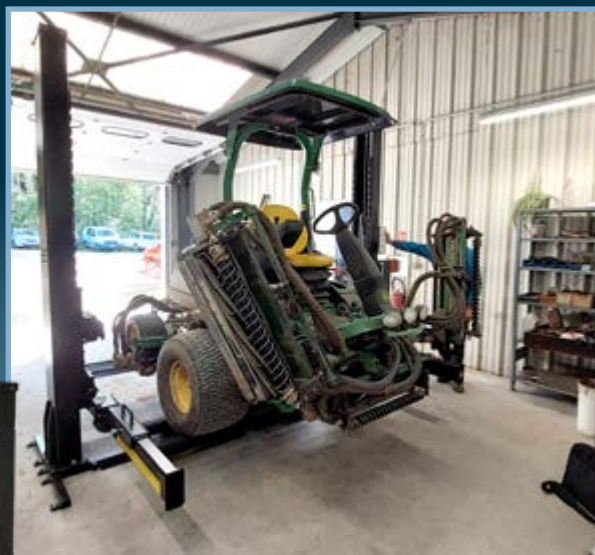
Securing the wheel while the lift is raised

**2 YEAR
WARRANTY**

**3200 KG
CAPACITY**



EASY ACCESS UNDER THE VEHICLE



**WHEELS MAY REST
ON THE PLATFORMS**



... OR HANG FREE



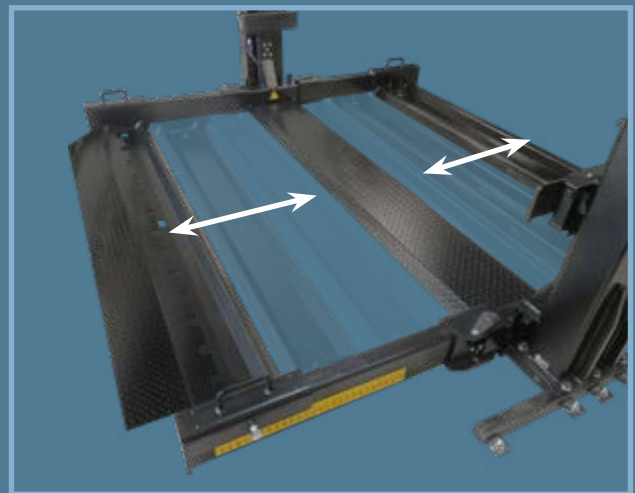
GREAT VERSATILITY

ADJUST WHEELBASE IN SECONDS

Using the sliding platforms



WHEELBASE
1050↔2600 MM



EASY ACCESS TO BLADES AND ATTACHMENTS



OPTION

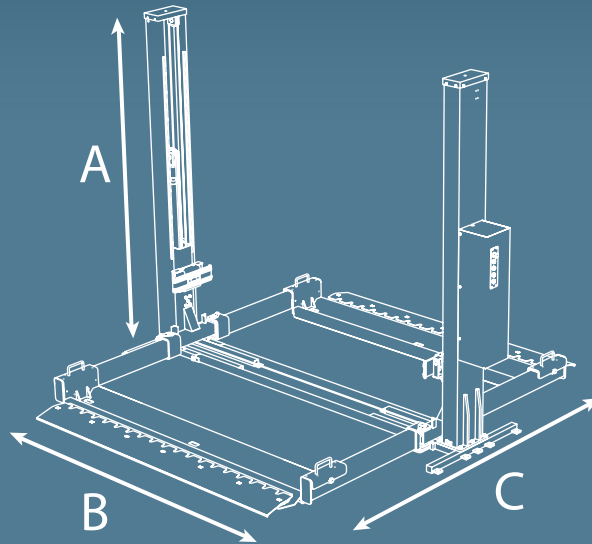
RECESSED INSTALLATION KIT

Ref. 700457

PRODUCT SPECIFICATIONS

| Ref. | Model | Max. capacity | Time to max. height | Power supply | Overall dimensions (L x W x H) | Weight |
|--------|---------|---------------|---------------------|----------------------------------|--------------------------------|----------|
| 700450 | 3200 LV | 3200 kg | ≈55 s | Single-phase 230V/50Hz 1,5 kW | 3400 x 3600 x 2850 mm | ≈1300 kg |

| A - Lifting height | B - Track width | C - Wheelbase |
|--------------------|-----------------|----------------------|
| 1800 mm | Maximum 2500 mm | From 1050 to 2600 mm |

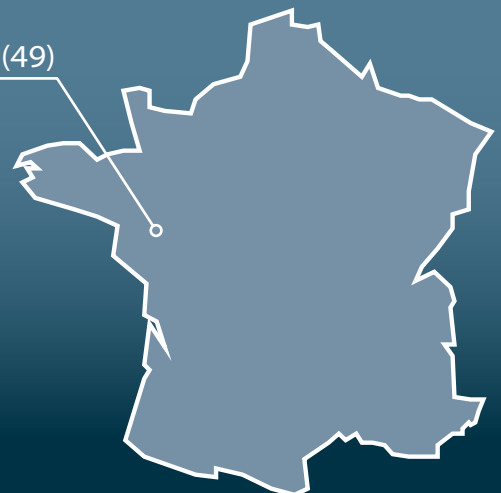


ABOUT US

Established in France in 1958, we specialize in the development, manufacture, and distribution of professional workshop equipment. From our headquarters in Cholet, we work in strong partnership with premium brands all over the world, such as YAMAHA, HONDA, HUSQVARNA, STIHL ...

Equipment stamped «MAROLO» is recognized and chosen by professionals for its heavy-duty design, quality of construction, ergonomics and smartness. In our world, customer satisfaction always comes first, and our teams' strategy reflects this.

Cholet (49)





MAROLO



MAROLO

11, Boulevard du Cormier - B.P. 20753
49307 CHOLET cedex - FRANCE

 +33 (0)2 41 29 29 29
 contact@marolotest.com

MAROLOTEST reserves the right to amend this document without prior notice. Non-contractual dimensions and pictures. See our sales conditions on our website.
Design by MAROLOTEST MB - 07/2024

Tel. +33 (0)2 41 29 29 29 - Email. contact@marolotest.com